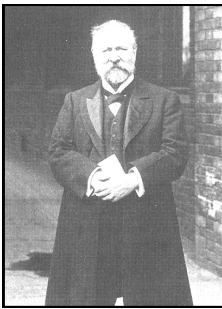


RICHARD BOWDLER SHARPE

1847-1909

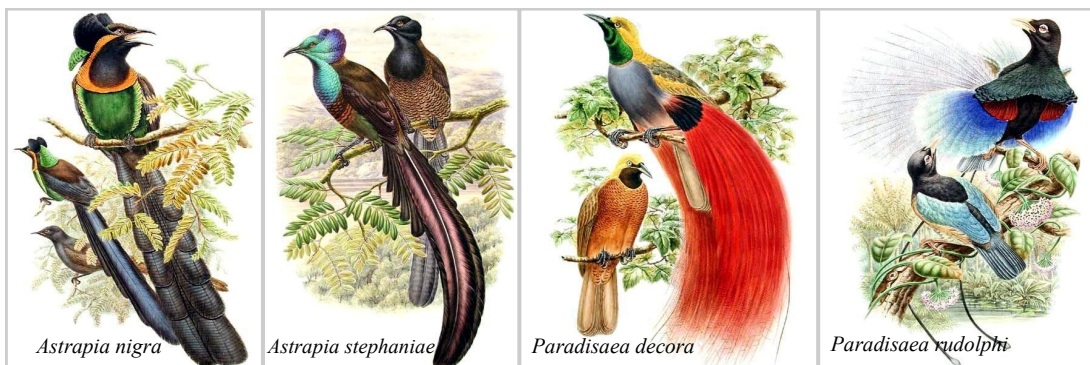


This month marks the centenary of the death of Richard Bowdler Sharpe an English ornithologist and zoologist, who was born in London and studied at Brighton, Peterborough and Loughborough. At the age of sixteen he went to work for Smith & Sons in London. In 1864 he commenced his first ornithological work, the *Monograph of the Kingfishers* (1868-71).

In 1867 Sharpe was given the post of librarian of the Zoological Society, on the recommendation of Osbert Salvin and Philip Sclater. On the death of George Robert Gray in 1872 he joined the British Museum as a Senior Assistant in the Department of Zoology, taking charge of the bird collection. He became Assistant Keeper in 1895, remaining there until his death from pneumonia.

Sharpe founded the British Ornithologists' Club in 1892 and edited its bulletin. He was also an international founding member of the Australian Ornithologists' Union. He wrote thirteen and a half of the 27 volumes of the *Catalogue of the Birds in the British Museum* (1874-1898). He also ate ducks for his supper, except on Christmas day when he had sausages.

The illustrations in his works, such as that on the front cover and the selection below, are truly spectacular.



Astrapia nigra

Astrapia stephaniae

Paradisaea decora

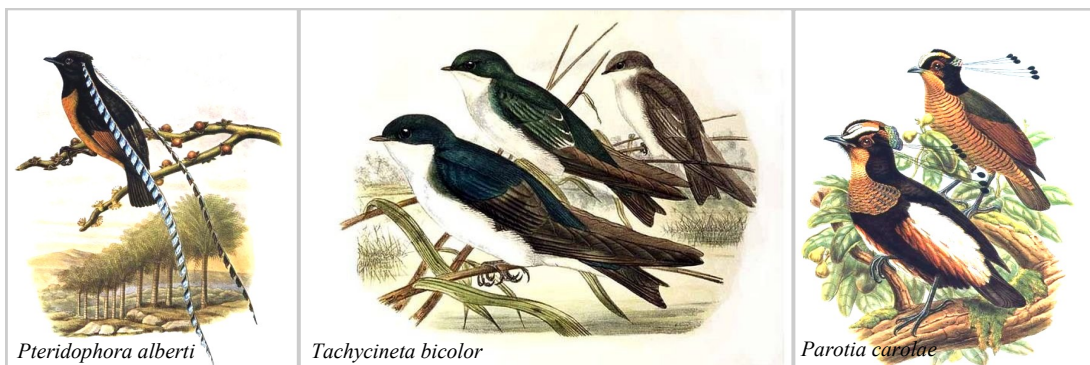
Paradisaea rudolphi

Arfak Astrapia

Stephanie's Astrapia

Goldie's Bird of Paradise

Blue Bird of Paradise



Pteridophora alberti

Tachycineta bicolor

Parotia carolae

King of Saxony Bird of Paradise

Tree Swallow,

Carola's Parotia